

Floor Grinding & Polishing Block TW71

地坪磨块&磨片

Fan-shaped Block (扇形磨块) TW711

Grit (目数)	TW7110	PCD+6#/16#/24#
	TW7111-TW7119	16#/24#/40#/80#/120#/180#
Installation (安装方式)	TW7110-TW7111	3*M8/3*φ9
	TW7112	3*M8
	TW7113	R179-3*M8
	TW7114-TW7115	2*φ13
	TW7116	M6
Type (类型)	H hard bond (耐磨) C15-C25	S soft bond (锋利) C40-C55
	M middle bond (通用) C25-C40	SS super soft (超利) ≥C55

TW7110A



TW7110B



TW7110C



TW7110D



TW7111A



TW7111B



TW7111C



TW7111D



TW7111E



TW7111F



TW7111G



TW7111H



TW7111I



TW7112A



TW7112B



TW7112C



TW7113A



TW7113B



TW7114A



TW7114B



TW7115A



TW7115B



TW7115C



TW7115D



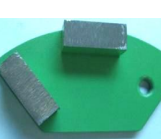
TW7116A



TW7116B



TW7116C



TW7116D



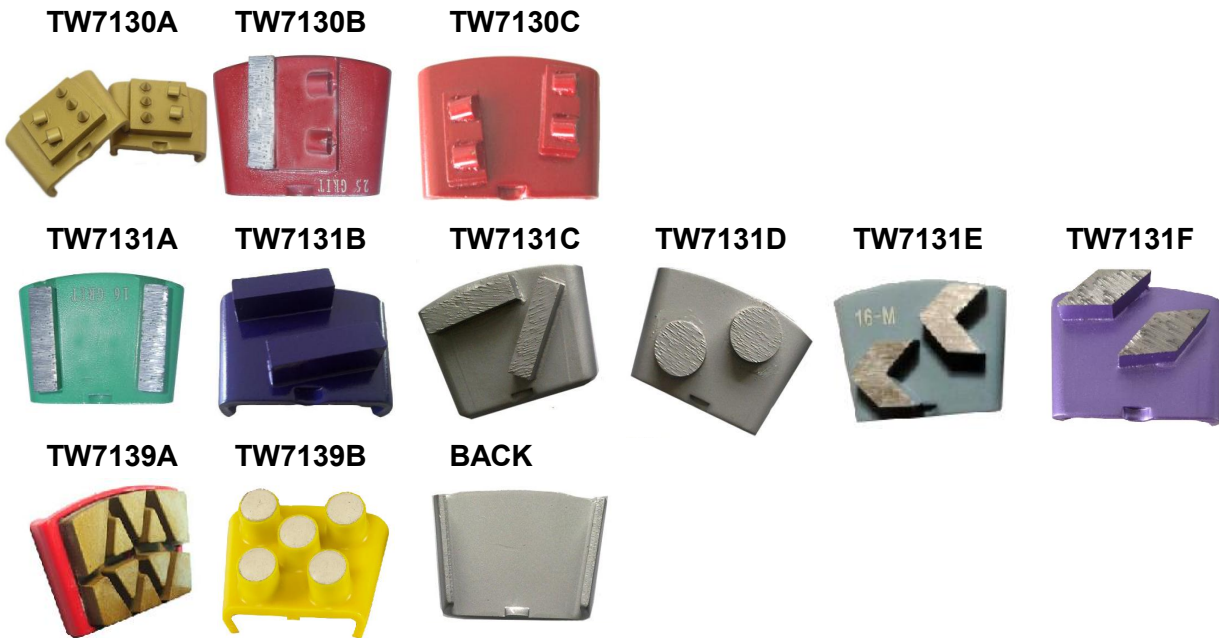
**Werkmaster Block (R38/2\*φ10H8磨块) TW712**

Grit (目数)	TW7120	PCD+6#/16#/24#
	TW7121-TW7128	16#/24#/40#/80#/120#/180#
	TW7129	30#/50#/100#/200#/400#/800#1500#
Installation (安装方式)	TW7120-TW7128	2*φ10H8
	TW7129	Velcro
Type (类型)	<b>H</b> hard bond (耐磨) C15-C25	<b>S</b> soft bond (锋利) C40-C55
	<b>M</b> middle bond (通用) C25-C40	<b>SS</b> supper soft (超利) ≥C55



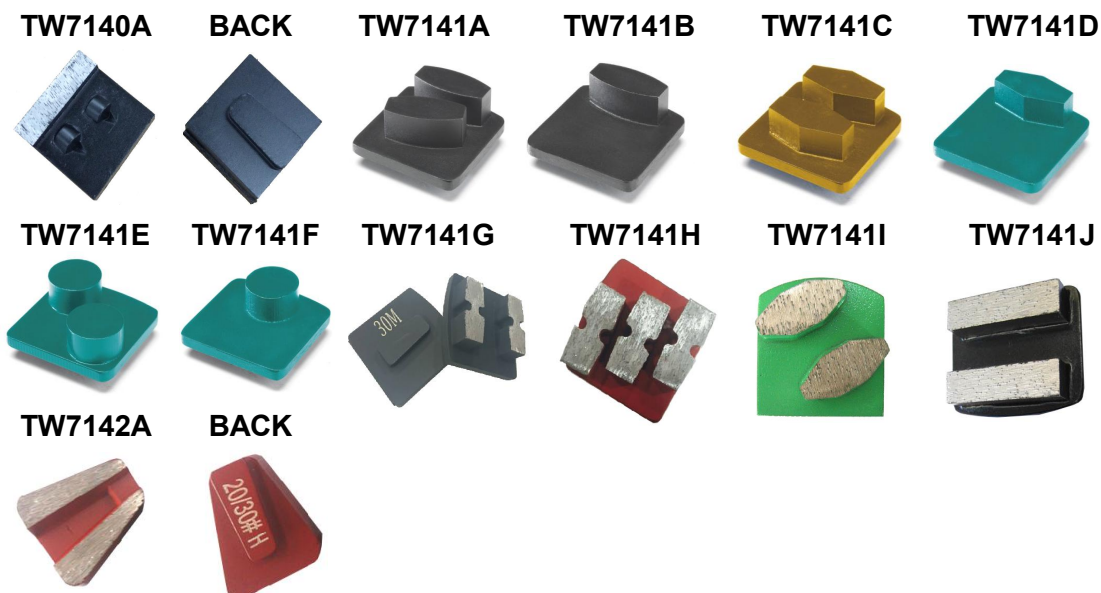
**HTC Block (HTC磨块) TW713**

Grit (目数)	TW7130	PCD+6#/16#/24#
	TW7131-TW7138	16#/24#/40#/80#/120#/180#
	TW7139	30#/50#/100#/200#/400#/800#1500#
Installation (安装方式)	TW7130-TW7139	HTC-Snap Locking
Type (类型)	<b>H</b> hard bond (耐磨) C15-C25	<b>S</b> soft bond (锋利) C40-C55
	<b>M</b> middle bond (通用) C25-C40	<b>SS</b> supper soft (超利) $\geq$ C55



**Redi Lock Block (Redi Lock 磨块) TW714**

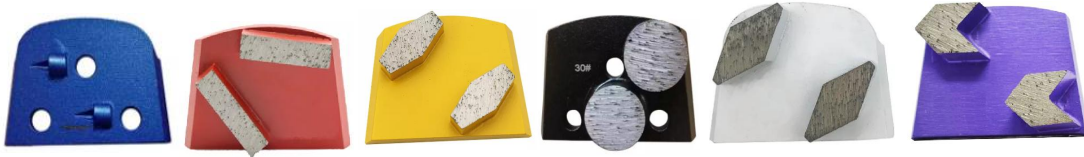
Grit (目数)	TW7140	PCD+6#/16#/24#
	TW7141-TW7148	16#/24#/40#/80#/120#/180#
	TW7149	30#/50#/100#/200#/400#/800#1500#
Installation (安装方式)	TW7140-TW7149	Redi Lock
Type (类型)	<b>H</b> hard bond (耐磨) C15-C25	<b>S</b> soft bond (锋利) C40-C55
	<b>M</b> middle bond (通用) C25-C40	<b>SS</b> supper soft (超利) $\geq$ C55



**Lavina Block (Lavina 磨块) TW715**

Grit (目数)	TW7150	PCD+6#/16#/24#
	TW7151-TW7158	16#/24#/40#/80#/120#/180#
	TW7159	30#/50#/100#/200#/400#/800#1500#
Installation (安装方式)	TW7150-TW7159	M6/M8
Type (类型)	<b>H</b> hard bond (耐磨) C15-C25	<b>S</b> soft bond (锋利) C40-C55
	<b>M</b> middle bond (通用) C25-C40	<b>SS</b> supper soft (超利) $\geq$ C55

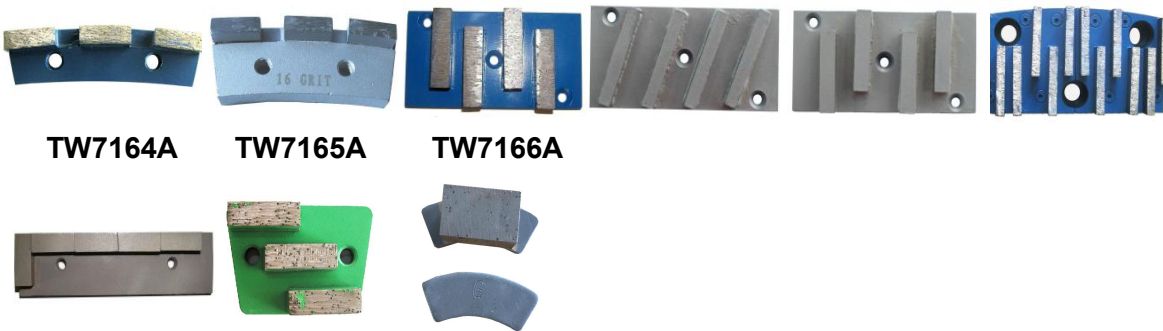
**TW7150A TW7151A TW7151B TW7151C TW7151D TW7151E**



**Other Types Block (其他磨块) TW716**

Grit (目数)	TW7160	PCD+6#/16#/24#
	TW7161-TW7168	16#/24#/40#/80#/120#/180#
	TW7169	30#/50#/100#/200#/400#/800#1500#
Installation (安装方式)	TW7160-TW7169	M6/M8
Type (类型)	<b>H</b> hard bond (耐磨) C15-C25	<b>S</b> soft bond (锋利) C40-C55
	<b>M</b> middle bond (通用) C25-C40	<b>SS</b> supper soft (超利) $\geq$ C55

**TW7161A TW7161B TW7162A TW7162B TW7162C TW7163A**





Floor Grinding & Polishing Plate TW72

地坪磨盘磨片

China Market Plate (中国市场磨盘) TW721

Grit (目数)	TW7210	PCD+6#/16#/24#
	TW7211-TW7219	16#/24#/40#/80#/120#/180#
Segment Spec. (刀头尺寸)	TW7211	40×12×12mm
	TW7212	R-40×12×12mm
	TW7213	φ20*12mm
	TW7214	Arrow-12mm
	TW7215	Hexagon-12mm
	TW7216	R30×12×12mm
Type (类型)	H hard bond (耐磨) C15-C25	S soft bond (锋利) C40-C55
	M middle bond (通用) C25-C40	SS supper soft (超利) ≥C55

TW7210A



TW7211A



TW7211B



TW7212A



TW7212B



TW7213A



TW7214A



TW7214B



TW7215A



TW7216A



BACK1



BACK2



BACK3



BACK4



**φ76 Trapezoid Segment Plate (φ76 梯形刀头磨盘) TW722**

Grit (目数)	TW7220	PCD+6#/16#/24#
	TW7221-TW7229	16#/24#/40#/80#/120#/180#
Installation (安装方式)	TW7221-TW7229	Back1-Back11
Type (类型)	H hard bond (耐磨) C15-C25	S soft bond (锋利) C40-C55
	M middle bond (通用) C25-C40	SS supper soft (超利) ≥C55

**TW7221A**

**TW7221B**

**TW7221C**

**TW7221D**



**BACK1**

**BACK2**

**BACK3**

**BACK4**

**BACK5**

**BACK6**



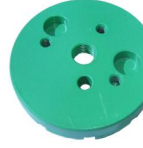
**BACK7**

**BACK8**

**BACK9**

**BACK10**

**BACK11**



**φ76 Other Segment Shape Plate (φ76 其他刀头形状磨盘) TW723**

Grit (目数)	TW7230	PCD+6#/16#/24#
	TW7231-TW7239	16#/24#/40#/80#/120#/180#
Installation (安装方式)	TW7231-TW7239	Back1-Back11
Type (类型)	H hard bond (耐磨) C15-C25	S soft bond (锋利) C40-C55
	M middle bond (通用) C25-C40	SS supper soft (超利) ≥C55

**TW7231A**

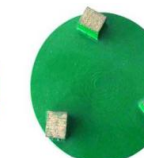
**TW7231B**

**TW7232A**

**TW7232B**

**TW7232C**

**TW7233A**



**BACK**

**BACK**

**BACK**

**BACK**

**BACK**

**BACK**



**TW7234A**

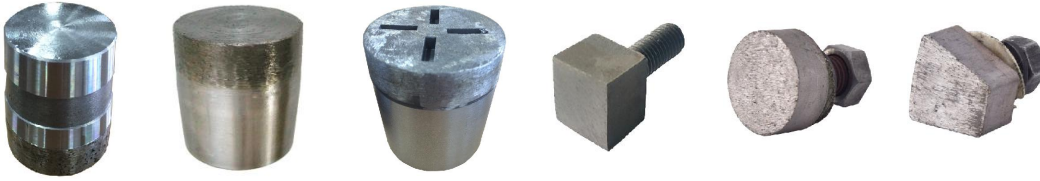
**BACK**



**Diamond Grinding Head (混凝土磨头) TW724**

Grit (目数)	TW7240-TW7249	16#/24#/40#/80#/120#/180#
Installation (安装方式)	TW7240-TW7249	As Technical Drawing (见图纸)
Type (类型)	<b>H</b> hard bond (耐磨) C15-C25	<b>S</b> soft bond (锋利) C40-C55
	<b>M</b> middle bond (通用) C25-C40	<b>SS</b> supper soft (超利) $\geq$ C55

TW7240    TW7241    TW7242    TW7243    TW7244    TW7245



Base1

Base2

Installation Base



**$\phi$ 100- $\phi$ 250 Other Types Plate ( $\phi$ 100- $\phi$ 250 磨盘) TW725**

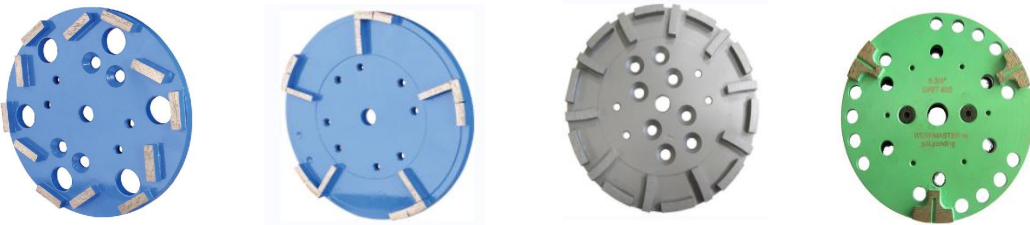
Grit (目数)	TW7250	PCD+6#/16#/24#
	TW7251-TW7259	16#/24#/40#/80#/120#/180#
Installation (安装方式)	TW7251-TW7259	As Technical Drawing (见图纸)
Type (类型)	<b>H</b> hard bond (耐磨) C15-C25	<b>S</b> soft bond (锋利) C40-C55
	<b>M</b> middle bond (通用) C25-C40	<b>SS</b> supper soft (超利) $\geq$ C55

TW7251A

TW7251B

TW7251C

TW7251D



TW7251E

TW7251F

TW7252A

TW7252B



TW7252C

TW7253A



Cup Grinding Wheels TW73

地坪碗磨

PCD Cup Wheels (PCD碗磨) TW731

Segment Quantity (刀头数量)	4" (100mm)	6×PCD 6×1/2PCD 6×1/4PCD
	5" (125mm)	8×PCD 8×1/2PCD 8×1/4PCD
	7" (180mm)	12×PCD 12×1/2PCD 12×1/4PCD
Installation (安装方式)	TW7310-TW7319	φ16.16/φ22.23/φ25.4/M14/M16/ 5/8"-11

TW7310A



TW7310B



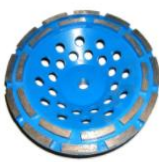
Grinding Cup Wheels (金刚碗磨) TW732

Grit (目数)	TW7321-TW7329	16#/24#/40#/80#/120#/180#
Installation (安装方式)	TW7321-TW7329	φ16.16/φ25.4/M14/M16/ 5/8"-11
Type (类型)	H hard bond (耐磨) C15-C25	S soft bond (锋利) C40-C55
	M middle bond (通用) C25-C40	SS supper soft (超利) ≥C55

TW7321A



TW7321B



TW7322A



TW7322B



TW7322C



TW7323A



TW7324A



TW7325A



TW7326A



TW7327A



TW7328A



TW7329A



BACK



BACK



BACK



BACK



BACK



BACK





**Hot Pressing Cup Wheels (整体热压碗磨) TW733**

Grit (目数)	TW7331-TW7339	16#/24#/40#/80#/120#/180#
Installation (安装方式)	TW7331-TW7339	φ16.16/φ25.4/M14/M16/ 5/8"-11
Type (类型)	<b>H</b> hard bond (耐磨) C15-C25	<b>S</b> soft bond (锋利) C40-C55
	<b>M</b> middle bond (通用) C25-C40	<b>SS</b> supper soft (超利) ≥C55



**Hard Polishing Pad (硬磨片) TW739**

Grit (目数)	TW7390-TW7399	30#/50#/100#/200#/4000#/800#-3000#
Installation (安装方式)	TW7390-TW7399	Velcro Backing
Type (类型)	<b>H</b> hard bond (耐磨) C15-C25	<b>S</b> soft bond (锋利) C40-C55
	<b>M</b> middle bond (通用) C25-C40	<b>SS</b> supper soft (超利) ≥C55



Floor Grinding & Polishing Frankfurt TW74

马蹄地坪磨块

Diamond Frankfurt for Concrete (水泥金刚马蹄磨块) TW741

Grit (目数)	TW7410-7419	16#/24#/40#/80#/120#/180#
Base (底座)	TW7410-7419	Aluminum/Iron/Steel 铝铁钢
Type (类型)	H hard bond (耐磨) C15-C25	S soft bond (锋利) C40-C55
	M middle bond (通用) C25-C40	SS super soft (超利) ≥C55

TW7410  
Alu-Base



TW7411  
Iron Base



TW7412  
Steel Base



TW7413  
Steel Base



TW7414  
Steel Base



Resin Frankfurt for Concrete (混凝土树脂马蹄磨片) TW742

Grit (目数)	TW7410-7419	30#/50#/100#/200#/4000#/8000#-3000#
Base (底座)	TW7410-7419	Velcro Backing
Type (类型)	H hard bond (耐磨) C15-C25	S soft bond (锋利) C40-C55
	M middle bond (通用) C25-C40	SS super soft (超利) ≥C55

TW7420



TW77421



BACK



Cassani Grinding & Polishing Block TW75

腰仔型磨块&磨片

Diamond Cassani (金刚腰仔型磨块) TW751

Grit (目数)	Concrete (混凝土)	16#/24#/40#/80#/120#/180#
	Granite (花岗岩)	36#/46#/50#/60#/80#/120# 180#/240#/320#/400#/500#
	Marble (大理石)	
	Quartz Stone (石英石)	
	Terrazzo (水磨石)	
Base (底座)	TW7510-7519	Aluminum/Iron/Steel 铝铁钢
Type (类型)	H hard bond (耐磨)	S soft bond (锋利)
	M middle bond (通用)	SS supper soft (超利)

TW7510



TW7511



TW7512



TW7513



TW7514



TW7515



Magnesite Cassani (菱古土腰仔型磨块) TW752

Grit (目数)	16#/24#/36#/46#/80#/120#/180 #/240#/320#/400#/500#800#1500#	
Type (类型)	M middle bond (通用)	S soft bond (锋利)

TW7521



TW7522



Resin Cassani (树脂腰仔型磨块) TW753

Grit (目数)	36#/50#/100#/200#/400#500# 800#1000#1500#2000#3000#	
Base (底座)	TW7530-7539	Plastic (塑料) /Velcro (尼龙扣)
Type (类型)	M middle bond (通用)	S soft bond (锋利)

TW7530



BACK1



BACK2



TW7533



BACK



Sponge &5-EXTRA Cassani (海绵腰仔型磨块&草酸腰仔型磨块) TW754&TW755

Grit (目数)	150#/180#/240#320#400#600#800#1000#2000#3000#6000#/10000#0#	
Base (底座)	TW7540-7549	Plastic (塑料) /Velcro (尼龙扣)
Type (类型)	M middle bond (通用)	S soft bond (锋利)

TW7540



BACK1



BACK2



TW7543



BACK



**Adaptor for Concrete Grinding & Polishing Tools TW79**

**混凝土磨块接头**

**Magnetic Metal Floor Grinding Adaptor (金属地坪磨块磁性接头) TW791**



**Resin Floor Grinding Velcro Adaptor (树脂地坪磨片尼龙扣接头) TW792**

Connecting (连接的磨片)	Items (型号)	Connect to below products(用于连接产品)
	TW7920	TW7129
	TW7921	TW7395
	TW7922	TW7390-TW7394
	TW7923	TW7530/TW7531/TW7540
	TW7924	TW7420/TW7421

